

G(e)o for JIRA

Project 5

Ján Marček, Tomáš Matula, Karol Bujaček, Martin
Měkota, Ondrej Kozlovský, Ján Ferko

DanubeHack 2015

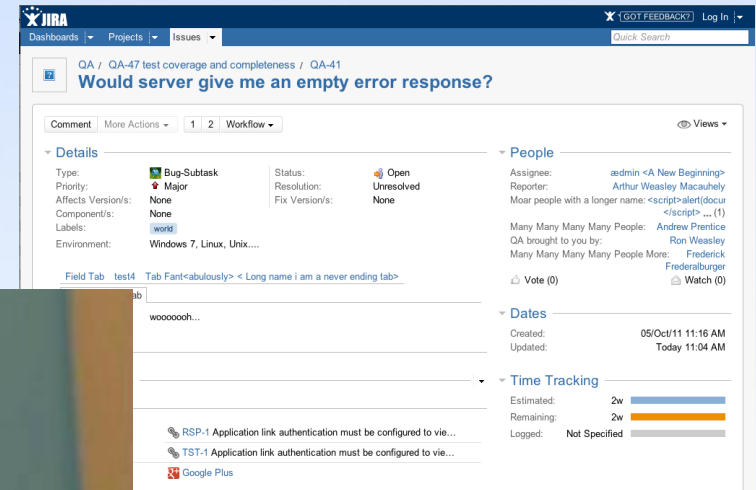
Our Motivation

- municipality New town of BA is using JIRA with more than 250 issues



What we use - JIRA

- issue tracking system.
- 13 years of experience



Data from people to municipality in better way...



- Do it better with JIRA and to find solution – „semiautomatic“
- **WHO ?** **WHERE ?** **WHEN ?** **WHY ?** **HOW MUCH?**



But information about location is missing.



a citizen/employee will be able to see issue on the Open Street Map

The screenshot shows a JIRA issue page for 'Repair pothole' in the 'Danubehack test / GEO-2' project. The issue is a 'Request' with a 'Major' priority, currently 'OPEN' and 'Unresolved'. The address is 'Venturska, Bratislava, Slovakia [N 48°8.571840', E 17°6.389100]'. The page includes a 'Details' section, a 'Description' section with a 'Click to add description' link, and a 'GeoData' section featuring a map. The map shows the location of the pothole in Bratislava, Slovakia, with a blue pin and a 'This issue' label. The map includes labels for various landmarks such as the Embassy of the Kingdom of Spain, the Embassy of the Republic of Slovenia, and the British Embassy. The map is provided by MapQuest, OpenStreetMap, and contributors.

JIRA Dashboards ▾ Projects ▾ Issues ▾ Agile WebFragments **Create** Search 🔍 ? ⚙️ 👤

Danubehack test / GEO-2
Repair pothole

Edit Comment Assign More ▾ Start Progress Resolve Issue Close Issue Admin ▾ Export ▾

Details

Type: **Request** Status: **OPEN** (View Workflow)
Priority: **Major** Resolution: **Unresolved**
Labels: **None**
Address: **Venturska, Bratislava, Slovakia [N 48°8.571840', E 17°6.389100]**
Mapka: [Odkaz na portal mapka.gku](#)

Description
[Click to add description](#)

GeoData

People

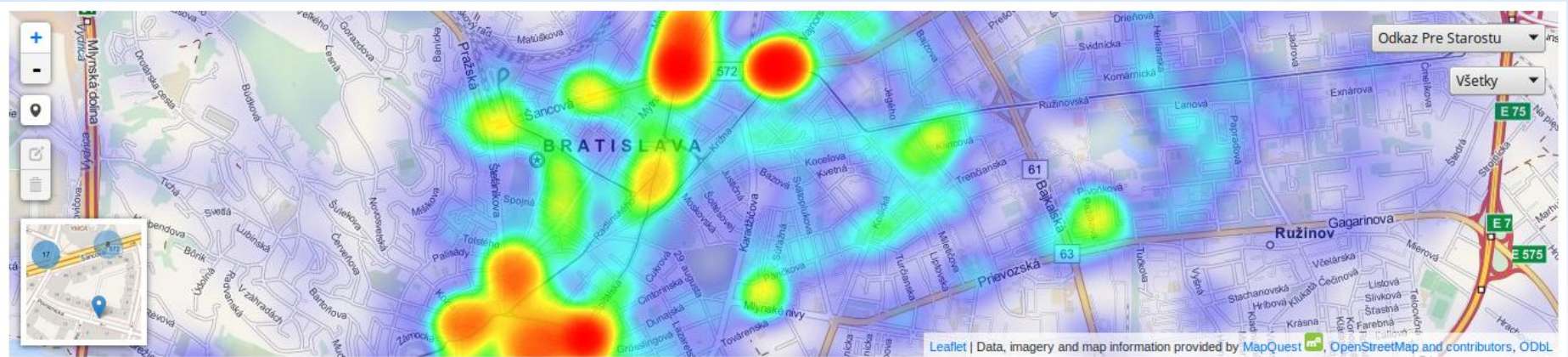
Assignee: **admin**
Reporter: **admin**
Votes: **0**
Watchers: **1** [Stop watching this issue](#)

Dates

Created: **4 hours ago**
Updated: **1 hour ago**

Leaflet | Data, imagery and map information provided by MapQuest, OpenStreetMap and contributors, ODbL

employee will be able filter the issues by category on the Open Street Map



Now JIRA shows owner of specific property to an employee



- Everyone has access to JIRA
- it's easy to track the issues and it is collected as open data.



BIG BROTHER



IS WATCHING YOU

The future

- Improve issue management
- WHEN ? WHY ? HOW MUCH?



Used technologies

- JIRA
- Open street map - nominatim, reverse geocoding functions
- Map displaying – JS library leaflet
- mapka.gku.sk – Geografical cadaster map

Thank you for being here

